

# REEL BREAKDOWN

<https://vimeo.com/277833457>



**Show:** "Gen - Lock"

**Role:** Compositing

**Software:** After Effects

Responsible for layering CG assets and integrating 2D stylized effects for the scene such as slow-motion debris, slid smoke, and explosion FX.

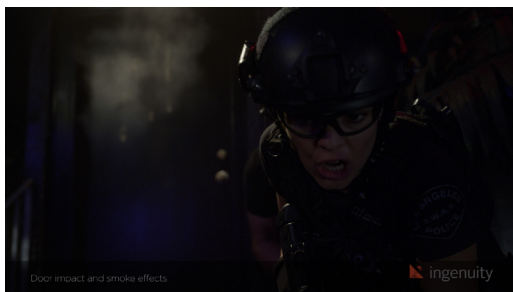


**Show:** "Gen - Lock"

**Role:** Compositing

**Software:** After Effects

Responsible for layering CG assets and integrating 2D stylized effects. Main work was developing weapon scoping look and impact effects.

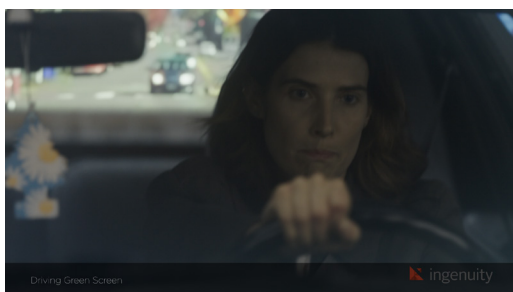


**Show:** "S.W.A.T."

**Role:** Compositing

**Software:** Nuke

Created effect for shotgun shells breaking apart the door. Used stock elements and separate plate shot to create the debris and smoke used.



**Show:** "Stumptown"

**Role:** Compositing

**Software:** Nuke

Responsible for green screen keying as well as integrating background footage for driving comp.



**Show:** "Stumptown"

**Role:** Compositing

**Software:** Nuke

Handled logo removal, spark pad removal, CG spark integration, and improving hill greenery. Hill template was passed from lead.

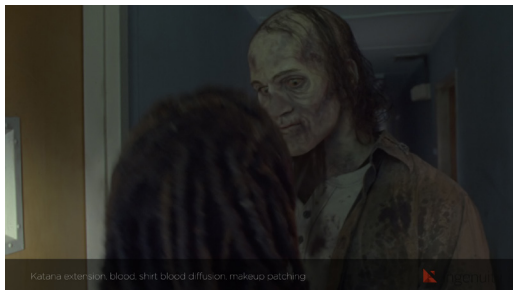


**Show:** "The Walking Dead"

**Role:** Compositing

**Software:** Nuke

Had to entirely reconstruct rear actor's body to match Negan's blade movements. Animated CG knife and added wound and blood. Also obscured Daryl stunt double.

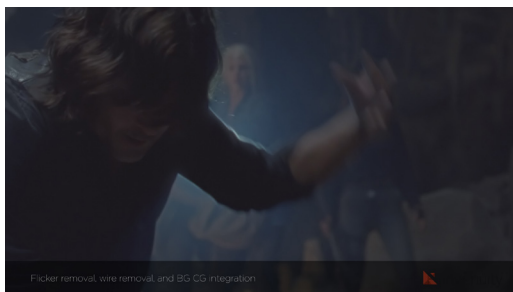


**Show:** "The Walking Dead"

**Role:** Compositing

**Software:** Nuke

Extended katana beyond green stump to protect actor. Added CG guts and blood and created blood diffusion look on shirt which would see additional use in later shots.



**Show:** "The Walking Dead"

**Role:** Compositing

**Software:** Nuke

Helped finish off painting out wire on Daryl. Worked with show lead to reduce flickering coming from the flashlight. Also integrated CG rocks to the BG.



**Show:** "The Walking Dead"

**Role:** Compositing

**Software:** Nuke

Integrated 2D fire stock footage and 2D ember. Matchmoved environments and rotoscoped foreground actors.



**Show:** "The Sandman"

**Role:** Compositing

**Software:** Nuke

Integrated CG title, CG character, and live-action plate. Duties included smoothing camera pathing and day to night conversion.

# REEL BREAKDOWN

<https://vimeo.com/277833457>

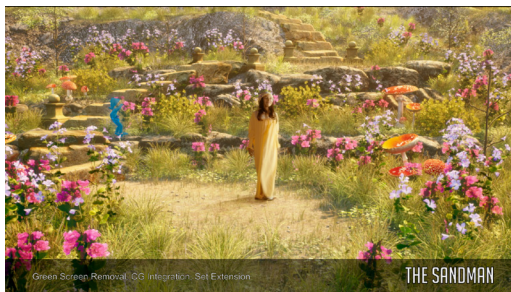


**Show:** "The Sandman"

**Role:** Animation, Modeling, and Compositing

**Software:** Nuke

Tasks for compositing included integrating CG character with live-action, replacing green screen stage, re-creating a digital set to relight based on character position.

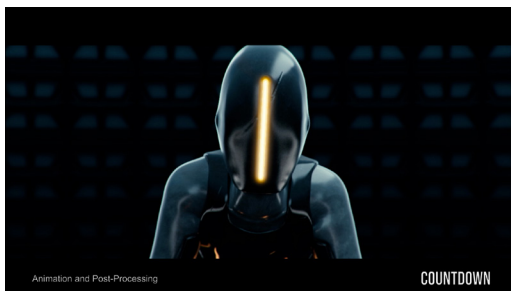


**Show:** "The Sandman"

**Role:** Compositing

**Software:** Nuke

Responsible for integrating environment from unreal engine, with live-action as well as CG character.



**Show:** "Countdown"

**Role:** Animation, Compositing

**Software:** After Effects

Responsible for all aspects. Full CG short. Used various post-process effects to bring the short to life.